



Kimseed International Pty Ltd

ACN 108 508 336

4/5 Collingwood St

Tel: 61-8-94464377

Western Australia

ABN 37 108 508 336

Osborne Park 6017

Fax: 61-8-94463444

www.kimseed.com.au

Email: kimseed@kimseed.com.au

Heavy Duty Brush Harvester Operators Manual



A truly versatile Trailed Brush Harvester designed to provide a simple and effective means of harvesting Grass Seeds and some small shrubs.

It can be towed by a small tractor or a 4 wheel drive vehicle in all sorts of terrain.

With a width of 2 meters it is both small but also capable of handling large surfaces.

**Australian Native
Seed Specialists**

**Seed & Revegetation
Equipment**

**Engineering Design
& Fabrication**

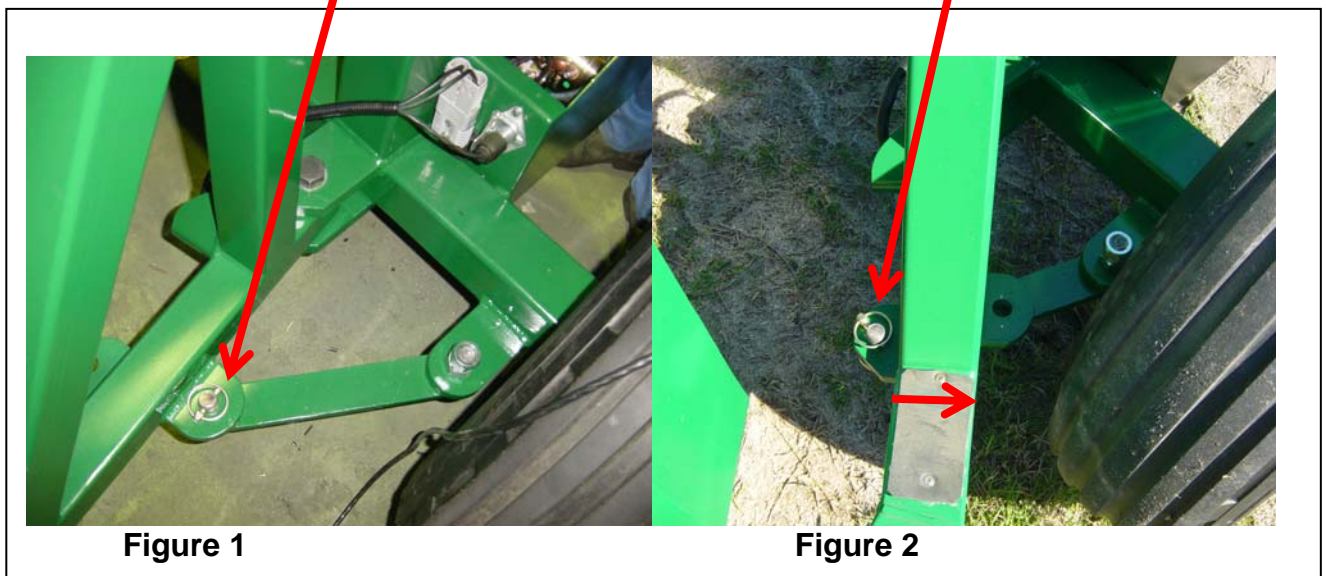
**Forestry
Management**

**International Environmental
Consultants**

Celebrating 35 years of sustainable land management

Pre Start Instructions:

- 1) **Motor:** Before starting motor check oil and fuel levels. Refer to motor operation instructions.
- 2) Lubricate all bearings with a good quality EP Grease.
- 3) Connect hitch to tractor or 4 wheel drive vehicle.
- 4) Connect Electrical wiring to 4x4 battery.
- 5) Operate Hydraulic System and raise Unit.
- 6) Remove Pin From Transport Locked Mode Position lug (See Figure 1) and Rotate to Harvest Mode Position as seen on Figure 2. Tow bar will need to be moved to the right.



7) Rotate Support located on Motor Side of Harvester Clockwise



Transport Position



Harvesting Position

8) Further, **Figure 4** shows bar on **Transport Mode**. Rotating this bar **Counter Clockwise**, it matches the locking point for **Harvesting Mode**. **See Figure 2**

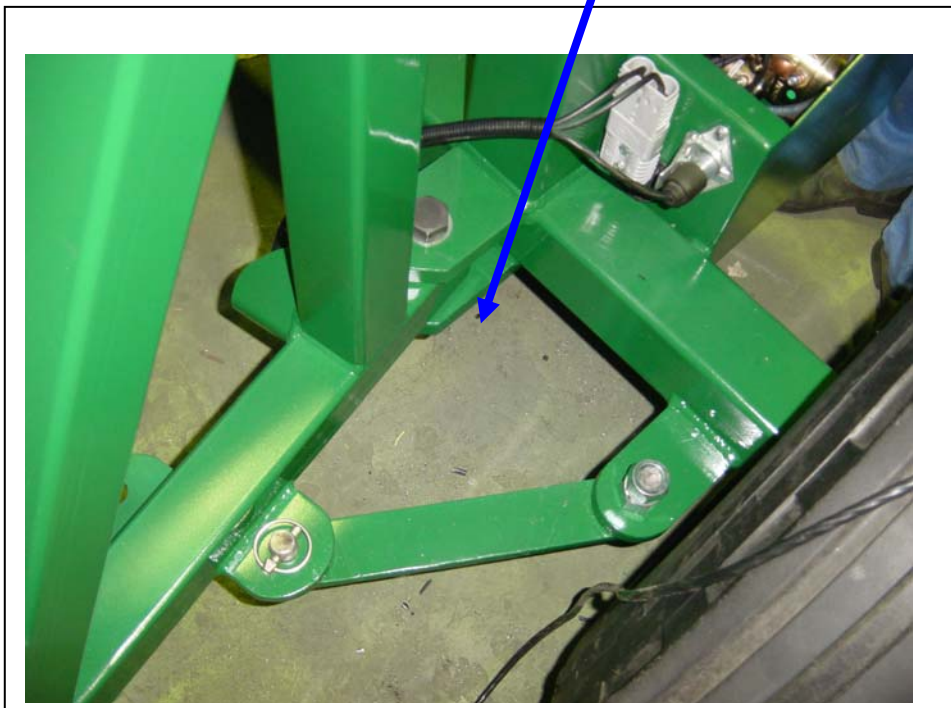
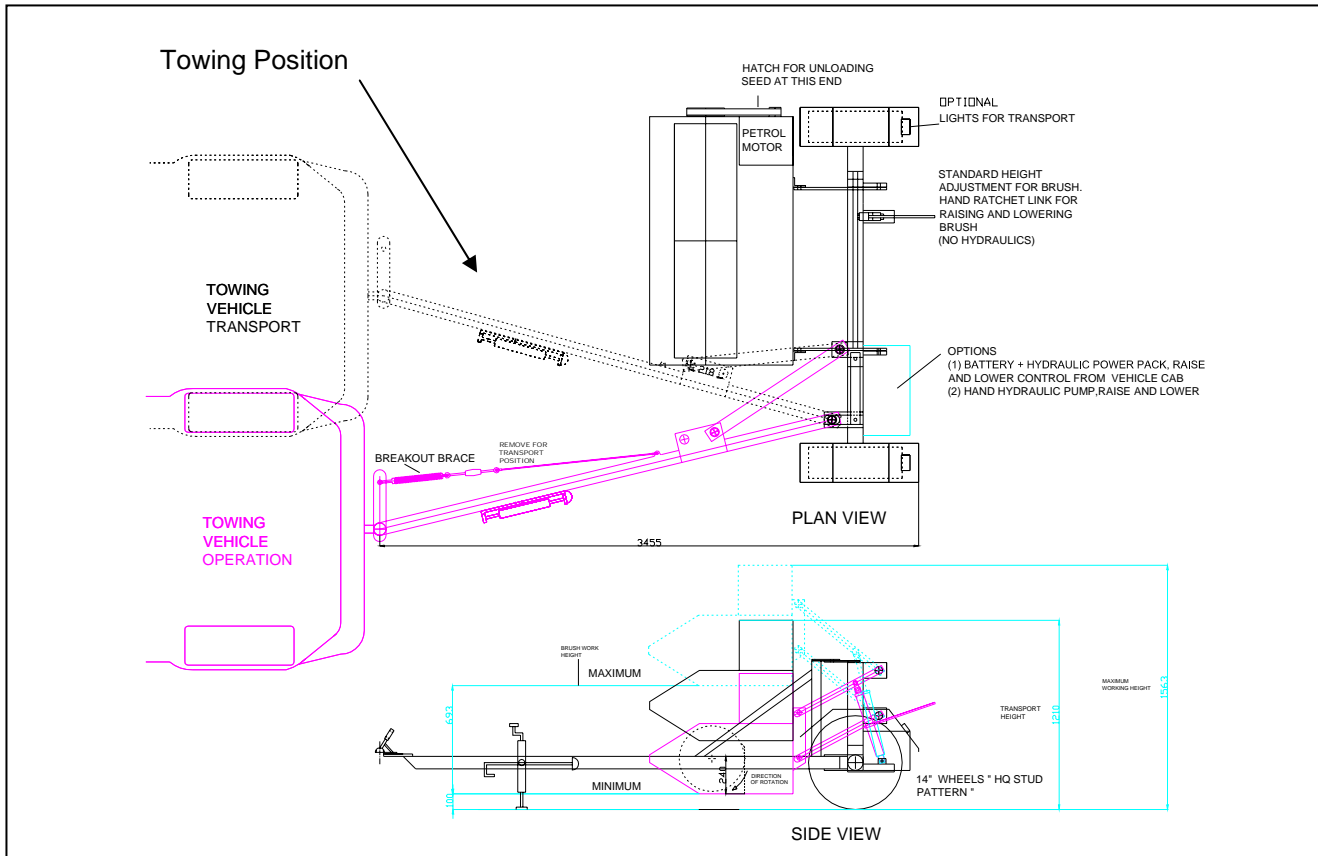


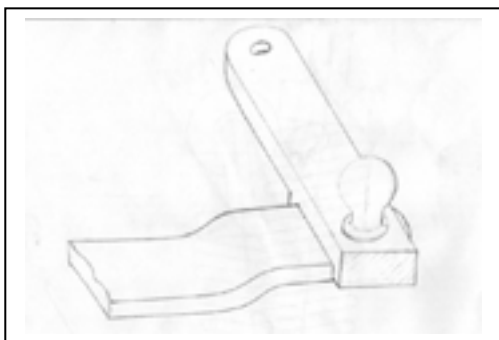
Figure 4

Towing and Operation



Towbar bracket:

The towbar bracket is mounted on-to the towbar of the vehicle and is made for a standard 75mm wide tow bar. The bracket is mounted with the square lugs facing down.



Drawbar Position:

Drawbar position is adjusted by pulling out the positioning pin and swivelling the drawbar towards the motor for Travelling or away from the motor for Working, then re-inserting the pin.



Break-out Brace (Spring and Turnbuckles):

- The break-out brace is to be used in the working mode. It mainly assists turning to the left when the machine is offset to the side.
- The Break-out brace is “D” Shackled to the “Towbar bracket” and to the draw-bar.
- The break-out brace should be tightened snug when the machine is in the work position and the vehicle is straight ahead.

9) Remove spacers fitted to hydraulic Cylinder to be able to lower the unit down to operation position.

10) Do not transport Harvester at High Speeds on irregular terrain.

CAUTION: WHEN TRANSPORTING, HARVESTER MUST BE RAISED ABOVE HITCH LINKAGE BEFORE THIS CAN BE SET INTO TRANSPORTING MODE.



Harvesting:

1. When harvesting , first raise Harvester a few centimetres off the main supports.
2. Set hitch into harvesting position and locate locking pins.
3. Start motor and set speed to medium throttle.
4. Adjust height of harvester so that front is approximate 10 cm below seed head.
5. Proceed with harvesting. Check seed storage box regularly and empty as required using scrapper supplied.

CAUTION: HARVESTING SPEED SHOULD BE SET TO SUIT THE FIELD CONDITION (IRREGULARITIES IN THE TERRAIN AND SEED DENSITY) AND SHOULD NOT EXCEED 15 Kph (10 Mph)