



Kimseed International Pty Ltd

ACN 108 508 336

4/5 Collingwood St

Tel: 61-8-94464377

Western Australia

ABN 37 108 508 336

Osborne Park 6017

Fax: 61-8-94463444

www.kimseed.com.au

Email: kimseed@kimseed.com.au

Kimseed Seed Cleaner Mk3



Proven and used in seed research and seed production laboratories throughout the world for pasture, grain, tree and flower seeds.

It has been shown to provide a cleaner sample with a production rate four times better than comparable machines (up to 150kg an hour based on wheat).

Constant vibration of a pulse motor causes a smooth, fast flow of seeds across the screens. There is an infinite variation in both the airflow and vibration, which enables precise separation of all seeds.



Features:

- Infinite adjustment at the turn of a knob.
- 2 x Screens 380 mm x 230 mm (Now Magnetic) allows easy size change
- Capacity up to 150 kg per hr. (based on wheat)
- Feed hopper capacity 18 litres (14 kg wheat)
- Double hopper on aspirator
- Quick self clean between samples



Kimseed Seed Cleaner Mk3

The Kimseed Seed Cleaner is an extremely efficient and precise machine.

- *It will process seeds in half the time of comparable cleaners
- *Versatile adjustments give ample flexibility regardless of seed variety.
- *Extremely easy to clean. Self cleaning screens after the job is finished and easy to clean under shaker tray.

It will successfully clean small batches of:

- beans
- peas
- flowers
- tree seeds
- Atriplex species
- a wide range of other seeds

The Seed Cleaner's throughput is a remarkable 40 to 150 kg per hour!

•NO BELTS OR PULLEYS TO ADJUST. Screen vibration and fan control operate at the turn of knob, with continuous variation. Adjustment is precise and quick.

•FAST AND EFFICIENT SEED CLEANING

Constant vibration of pulse motor causes a smooth fast flow of seeds across the screens. Movement is much improved compared to the older style 'Stop-start shaker' method.

To assist in the seed flow, the hopper now has a sliding and rotating agitator. Moving it sideways and rotating greatly improves seed flow of non-flowing seed samples.

• QUICK SELF-CLEAN BETWEEN SEED SAMPLES.

With a turn of the screen shaker knob to Maximum the machine cleans itself by severe vibration. The careful design ensures there are no seed traps.

• TWO SCREENS. (New Magnetic frames)

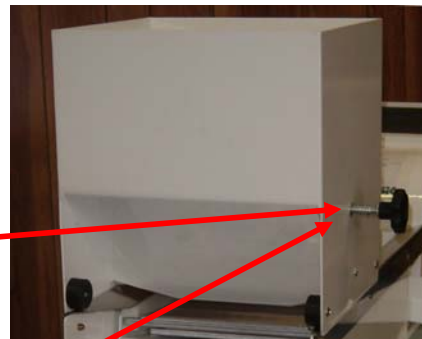
Two screen frames of dimensions 380mm x 230mm slide easily in and out on silicon impregnated nylon slides.

• OTHER DETAILS.

- ⇒ Light weight welded Powdercoated Steel
- ⇒ Quiet operating
- ⇒ Screens available in 30 sizes of mesh
- ⇒ Stand and container supports

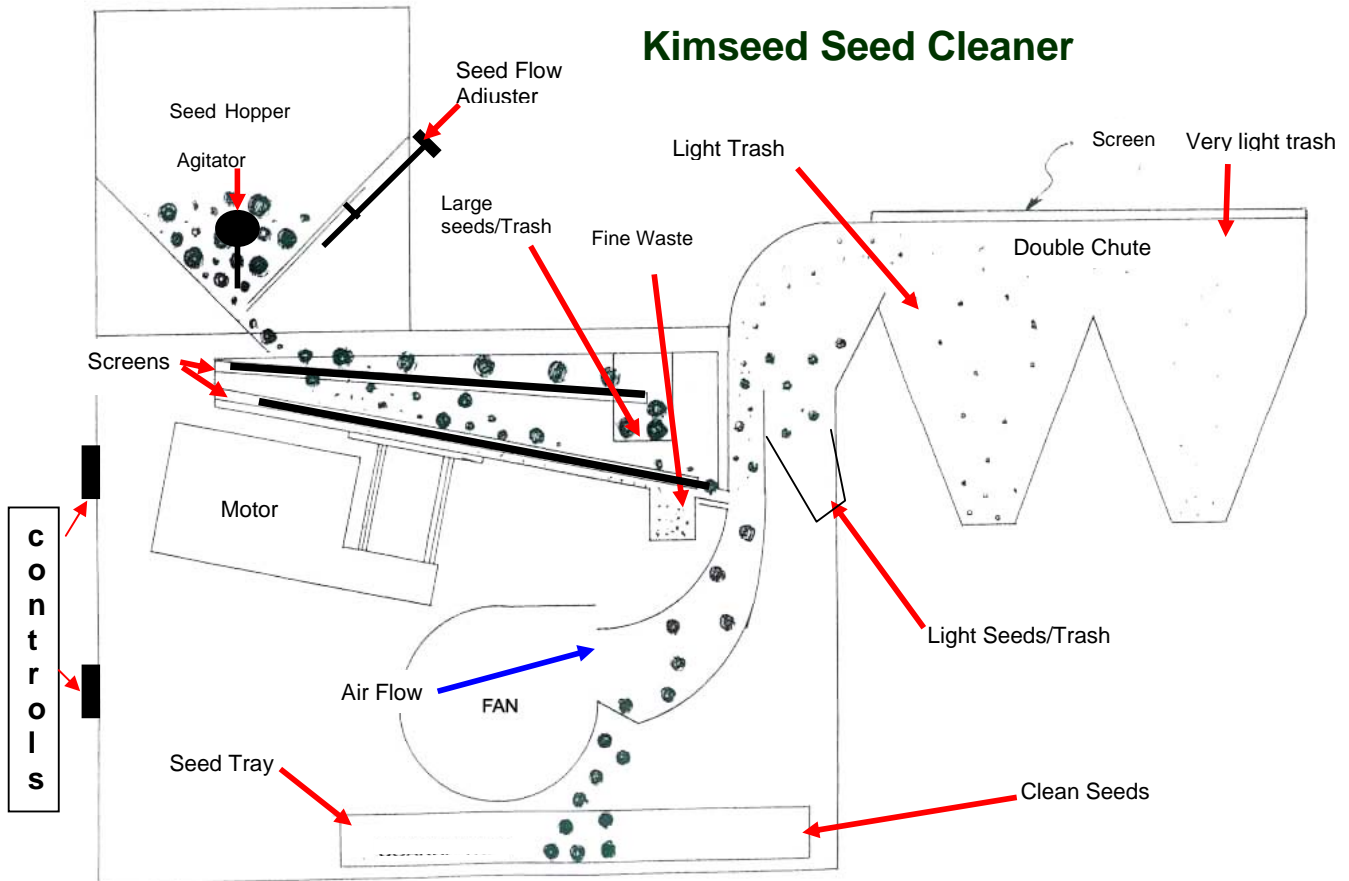


Hopper Gate Adjustment



Seed Flow Agitator

Seed Flow Diagram



The Seed Flow Diagram shows the flow through the Cleaner of seeds and impurities and helps to understand the principles used in cleaning seeds: Size and Weight.

1/ Size and shape by means of the Top and Bottom Screens on magnetic frames

2/ Weight by means of the Fan and aspiration process.

The used of differ screens coupled with the many adjustments possible on the Air Flow, allows for accurate settings that will result in clean Pure Seed samples.



FEATURES

No belts or Pulleys to adjust

Screen vibration and fan control operate at the turn of a knob. Adjustments of both vibration and fan are precise and quick. Vibration is achieved through an FMC Magnetic Pulse Shaker and Air Flow is by a Silent Radial Fan.

Fast and efficient seed cleaning of a wide variety of seed types

Constant vibration of pulse motor causes a smooth fast flow of seeds across the screens. Movement is much improved compared to the older style “stop-start” shaker method.

Quick self clean between samples

With the turn of the screen shaker knob to maximum the machine cleans itself by severe vibration. The careful design ensures there are no seed traps.

Convenient ports are provided to assist in cleaning the unit after use.



Two screen frames - now magnetic

The two screen frames 380mm x 230 mm slide easily in and out on durable Plastic High Density Polyethylene slides.

Cut Screen Sizes for the magnetic frames are 290 x 229 .

Typical Round Holes sizes are 1.2, 1.6, 2.0, 2.3, 3.1, 3.9, 4.7, 6.3, 8.0, 9.0, 9.5 mm.

NOTE: Other sizes including Slotted Holes can be requested



SET UP

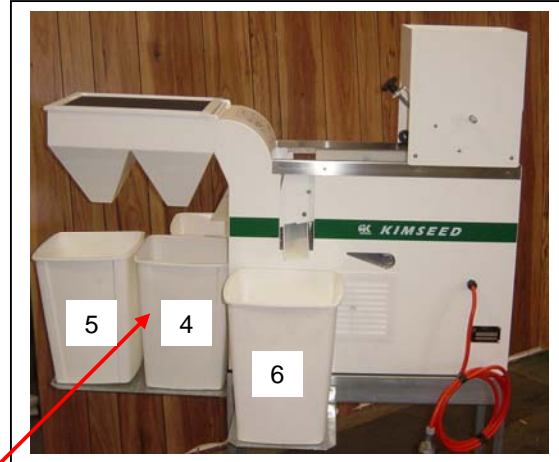


NOTE: Screws only required on stands without corner angles.

Screw Seed Cleaner Main Body to Stand using Allen Screws and Allen Keys Supplied

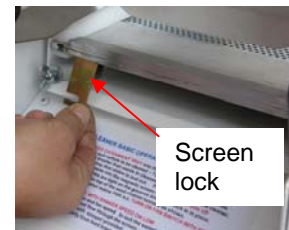
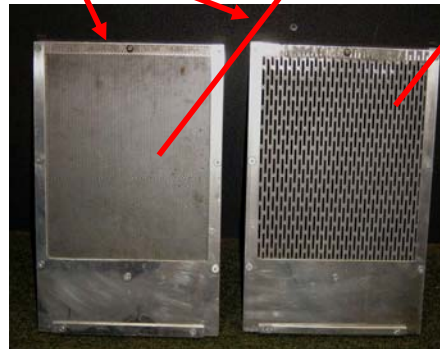
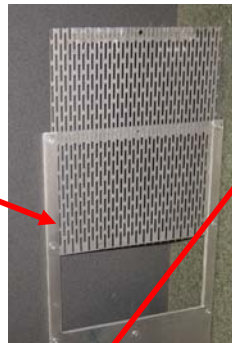


**Screw in position Seed Bin Support Trays using screws supplied
Follow Markings On Trays**



Set Up details

- Set-up the catchments containers on the stand at trash and seed outlets.
- Select and Install screen onto frame.
- **MAKE SURE SMOOTH SIDE OF THE SCREEN IS ON TOP**
- Select and slide-in lower and upper screens to suit sample to be cleaned.



- Always select a larger screen size for the top slide.
- Place Seed Hopper on top, with knob towards the centre of machine.
- Fit Screen Lock and tighten wing nut





PRECLEANING EVALUATION

Determine:

- the size of large impurities
- the size of seed to be cleaned.
- the size of small impurities

It's important to keep in mind that some impurities will be the size of the seeds, and that those impurities can be removed by the Airflow through the Cleaner.

OPERATION

After Set Up is completed, the Seed Cleaner is ready to be used.

Position the Unit in a well ventilated area, or in an area where dust suction is available. Being a Seed Cleaner, there is always an amount of Dust being generated.

Plug the Unit into a 240 V ac power outlet. Make sure both switches are in the "OFF" position.

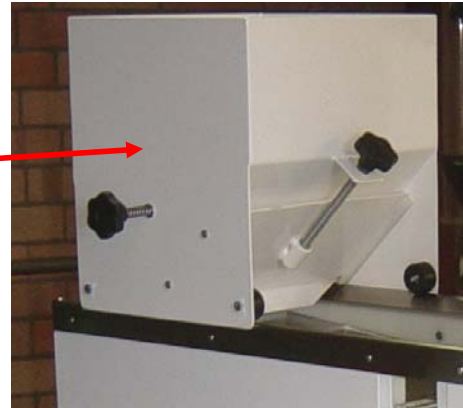
Turn on as below:



- 1) Turn Fan "ON"
- 2) Set Speed to "0".

- 1) Turn Shaker "ON"
- 2) Turn Shaker knob to about 5

Place Seed Hopper on Cleaner, with Adjusting knob to the screens side . Check that the hopper gate is closed.



Hopper: Fill the Hopper with Seeds, making sure hopper that the gate is closed.

Fan: Switch the Fan “ON” with Speed Knob on “0”
The fan separates light weight material from heavier material as it falls into the air stream.

The Fan Speed should be adjusted so that the airflow lifts the trash away from the seed .

If cleaning very light seeds, the fan speed should be reduced to “1” or “2” depending on Seed Type and weight. Very light Seeds may require negligible air flow. As the seed weight varies so would the Fan Speed, depending on the impurities weight in relation to the seed’s weight.

Shaker: The shaker controls the speed of material flowing over the screens. At the end of each batch of seed cleaned, turn shaker Knob to # 7. The higher vibration at this setting will help clean the screens.

Cleaning: With the Cleaner Switched ON, open gradually the Hopper Gate by turning the knob Clockwise until a steady flow of seeds is achieved.

Gradually bring the air and shaker speeds up to a point that you see a steady seed flow through the screen. Adjust the wind so that all light impurities are removed and check that no seeds are being blown into containers 3 and 4.

MAINTENANCE AS YOU CLEAN :

The Scraper supplied with the cleaner should be used as needed to maintain the screens clean and the Seed Cleaner operating at its peak performance.



PLEASE NOTE: The weight of the seed will dictate the seed outlet setting:

A) Very Light Seed

1) Seed Tray 1: Heavy Seed

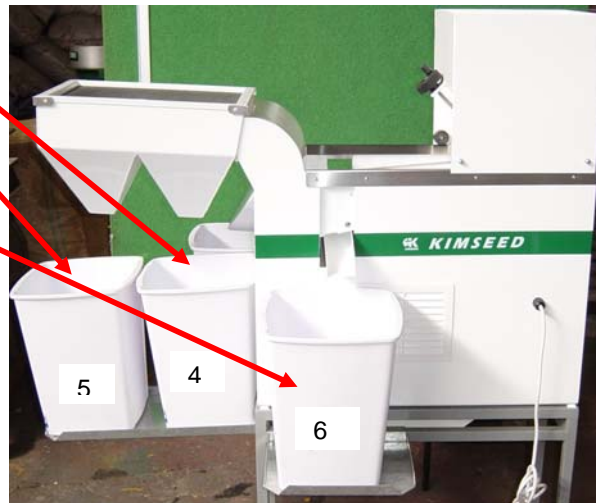
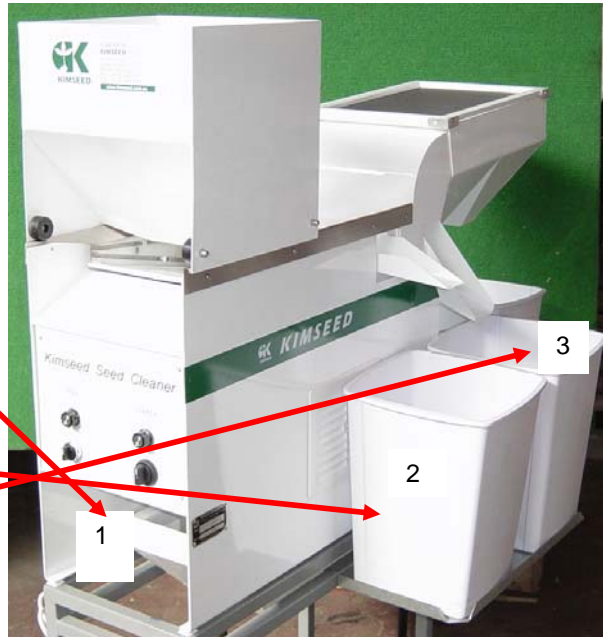
2) Bin 2 : Large material

3) Bin 3 : Seed-

4) Bin 4 : Seed-

5) Bin 5 : Light Material-

6) Bin 6 : Small impurities



B) Normal Seed:

a) Seed Tray:

Seed

b) Bin 2:

Large material

c) Bin 3:

Heavy Impurities

d) Bin 4:

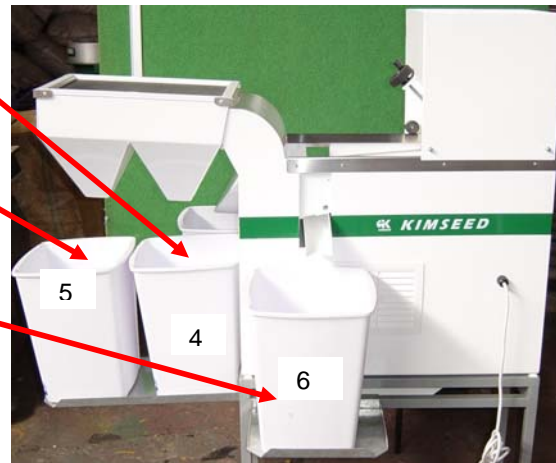
Medium Impurities

e) Bin 5:

Light Impurities

f) Bin 6:

Dust





Cleaning the Unit AFTER USE:

- 1) Turn the fan knob to 10
- 2) Turn the shaker knob to 7 until screens are clean.
- 3) Turn the shaker knob back to 3 and remove screens.
- 4) Turn the shaker knobs up slowly until all loose material has fallen into the fines chute and into the catchment containers.

NOTE: After a seed cleaning batch is completed, screens should be removed and a plastic scraper and air blasts should be used to completely remove all traces of seed and residue from all areas of the cleaner.

SPECIFICATIONS

Power	Electric, 240Volt, 50Hz
Cleaning rate	40 to 150 kg per hour
No. of screens	2 @ 380mm x 230 mm
Hopper height/Cap	1.4m (on-stand)/18Lts 14kgs wheat
Stand height	570mm
Weight	Machine net:60 kg / Screen: 1 kg each