



Kimseed Australia Pty Ltd

ABN 39 600 271 047

3 / 61 Buckingham Drive, Wangara 6065,
Western Australia.

Tel: +61- 8- 9409 2244 Email: machinery@kimseed.com.au

www.kimseed.com.au

Kimseed Multi-Thresher CW09

Electric : 240 volt AC 50 hz single phase 6 Amp



The **KIMSEED Multi-Thresher (CW09)** is designed to process a wide variety of seedpods from cereal grains such as Wheat, Barley, oats, rice and grasses to all legumes including Lupins, Chick Peas, Mung beans, Medics, Clovers, and Acacias. The heads or seedpods are fed via a **dust controlled chute** into the threshing chamber. As it turns the threshed material is forced through a **metering screen plate**. Seed is then separated from the dust and chaff particles using the revolutionary **Cyclone dust extraction system**

FEATURES & BENEFITS:

- **Varispeed threshing** at the turn of a knob, so **NO BELTS** to change;
- Our fully inbuilt **Dust Control System** allow for comfortable indoor usage;
- **Clear threshing chamber** door allows for easy inspection of the material as it is being processed;
- **3 Variable Air Valves** allow for full cleaning control.
- Quick cleaning with our fast action toggle lock door on the threshing chamber.
- **Variable screen placement** allows for a huge variety of seed types
- **3 Inspection Windows** allow for easy observation of the flow of seeds and trash throughout the entire threshing process;
- **Safety cut off switch** when opening chamber door;
- 100% improvement in seed cleaning times compared with similar machines on the market;
- The use of our new **Drop Down Screen** allows seed pods to be efficiently opened to release seed without creating large amounts of small seed trash;
- **10 screen sizes** to choose from;

Sustainable Land Management & Practical Applications since 1970

Australian Native
Seed Specialists

Seed & Revegetation
Equipment

Engineering Design
& Fabrication

Forestry
Management

International Environmental
Consultants



Kimseed Multi-Thresher CW09

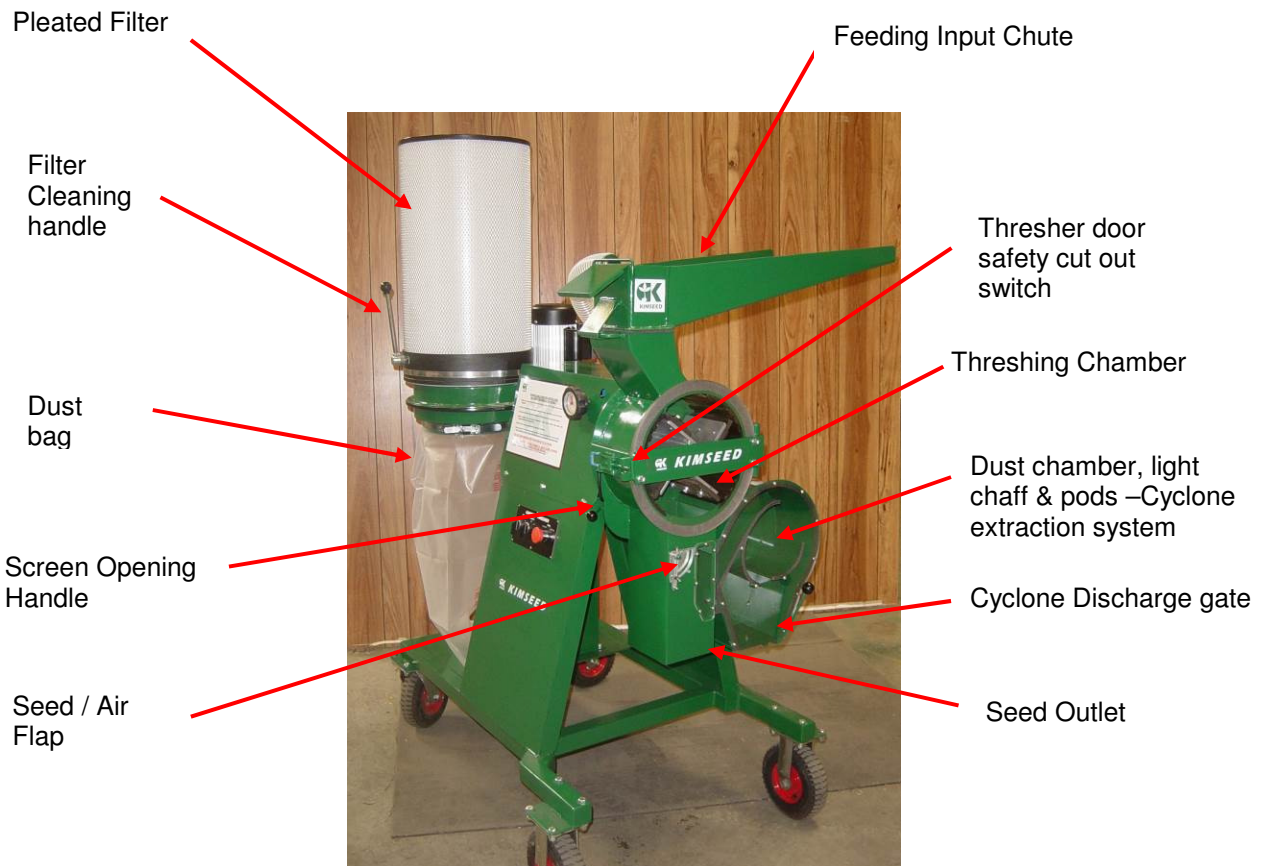
Kimseed Statement:

The latest Kimseed Multi-thresher CW09 is more effective and efficient than any other laboratory thresher throughout the world as a result of combining all the positive attributes of previous Kimseed and other thresher models.

Since Kimseed's conception of the thresher was introduced over 30 years ago more than 500 machines have been sold to research institutes and seed processing companies in over 50 countries worldwide.

The Kimseed Multi-thresher CW09 is the most reliable and durable laboratory seed thresher on the market due to its robust yet efficient design. The thresher is wholly manufactured in Kimseed's workshop in Perth Australia where qualified tradesman manufacture and assemble each component to stringent standards using only quality materials.

Kimseed Multi-Thresher Key Components:

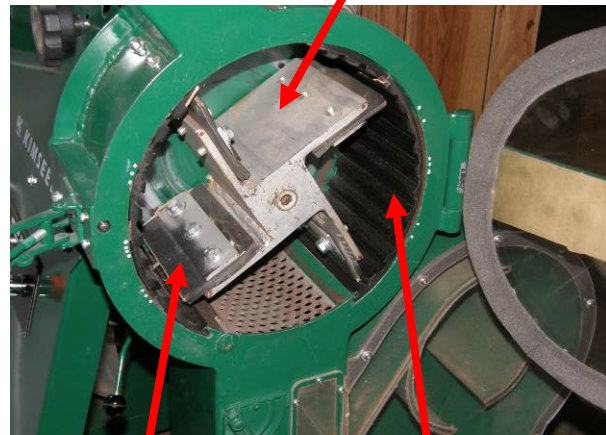


Kimseed Multi-Thresher CW09

Threshing Principles

To view operations on video go to you tube www.youtube.com/watch?v=sk-ZvyH5sCA

A sample of seed heads or seed pods is poured into the feed chute. Gently push the feeding flap to feed seeds onto threshing chamber where the sample is threshed. **For safety purposes the feeding flap closed automatically when seed pods are not being pushed in.**



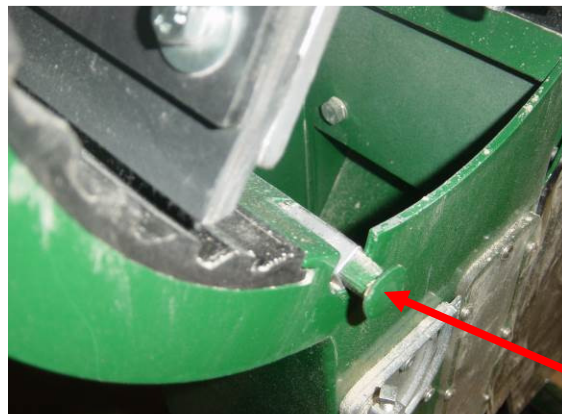
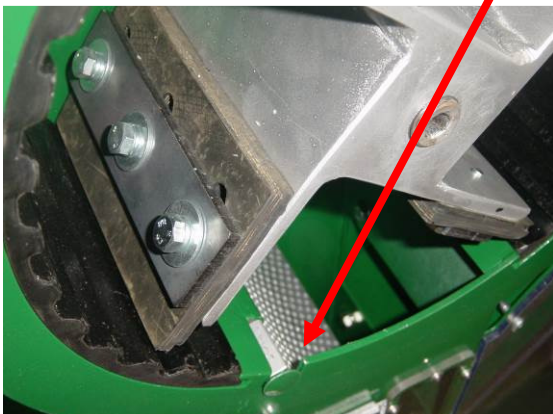
Rubber Beater

Concave

Rubber beaters thresh the heads or pods against ribbed concaves until the mixture of seeds and trash falls through the selected size metering plate. Having a drop down metering plate, allows for the easy removal of excess pods or chaff out of the threshing chamber.

Concaves are made from durable High Density Polyurethane and are fitted to the inside of the threshing chamber. These concaves provide an excellent textured surface for efficient threshing where seed is not damaged by hard steel edges.

Metering plates (screens) can be easily changed by removing the square pin. Standard metering plates are supplied with each machine. Screen sizes available are: Blank, 3, 4, 5, 6, 7, 8, 10, 12.5 and 15mm diameter holes. Other sizes are available by request



Screen Pin

Kimseed Multi-Thresher CW09 Machine Operation

To replace the screens , rotate the screen down with the screen adjust handle and remove the square pin. Remove the existing screen and fit the new screen, refit the pin and rotate the screen back firmly.

Processing legume seed pods



Seed feeding
into thresher
chamber



Seed threshing
in progress
Visual control of
threshing and
trash
separation.



Legume pods

Seed

Trash

Cleansed
Wheat

Processing Cereal bundles



Machine performance on some seed examples:

Atriplex amnicola - (River Saltbush)



Normal Clean Seed Inhibitors in bracts which slow down germination	Treated to remove inhibitors to improve germination then re-cleansed using Kimseed Thresher CW09 and Kimseed Seed Cleaner MK3	Pure Seed after threshing & cleaning stage
---	--	---

Atriplex nummularia – (Old Man Saltbush)



Normal Clean Seed Inhibitors in bracts which slow down germination	Treated to remove inhibitors to improve germination then re-cleansed using Kimseed Thresher CW09 and Kimseed Seed Cleaner MK3	Pure Seed after threshing & cleaning stage
---	--	--

Machine performance on some seed examples:

Nicandra physalodes: Apple of Peru – Shoo Fly



Curled Dock – Rumex crispus – Herbal vegetable



User's Testimonials:

- ✚ **Department of Agriculture and Food:** *"I have used it for all sorts of wheat samples and the thresher has been excellent", "we are definitely interested in the latest model"*
- ✚ **Gordon Francis, Lupin researcher UWA :** *"I have threshed all of my samples and have received excellent results. I am currently researching the potential to buy more machines in the future"*
- ✚ **CSIRO plant breeder Christiane Ludwig:** *"We have processed all types of cereal grains including wheat, lupins and chick peas with much success"*
- ✚ **Lessa Caldwell – The Greenhouse:** *"Very impressed with the result on my herbal seeds"*
- ✚ **Francois Basson:** *"We used this machine to process our 1000s types of native seeds with excellent results"*